

# *fresh look* 2000 PERIMETER



2000 PERIMETER PARK DR  
MORRISVILLE, NC 27560



***New Modern Exterior - building upgrades just completed!  
Two-story, 54,592 SF Class-A office building located just  
off I-40 and I-540 in the heart of Perimeter Park.***

- Flexible floorplates and high ceilings
- Abundant natural light on all floors
- Beautifully landscaped grounds and ample parking
- Surrounded by abundant retail and dining options

#### AVAILABILITIES

**Suite 140 - 13,796 RSF**  
**Suite 200 - 27,754 RSF**  
*full floor opportunity  
newly whiteboxed*

**\$26.50 PSF**  
**Full Service**

**TRINITY  
PARTNERS**

[PerimeterParkOffice.com](http://PerimeterParkOffice.com)

FITNESS CENTER



THE GREEN POCKET PARK



WALKING TRAILS



# unparalleled PARK AMENITIES



THE PATIO



THE PERK CAFÉ + LOUNGE



THE PERK MEETING SPACE

*2000 Perimeter Park enjoys easy access to the abundant amenities within Perimeter Park.*

- Two fitness centers with locker rooms and showers
- The Green pocket-park with bocce court and putting green
- 7 miles of walking trails
- Expansive outdoor lounge just outside The Perk Café
- Café + Lounge equipped with Wi-Fi and laptop hookups
- Meeting Space with 16-person boardroom & training room for up to 60
- Marketplace shops + restaurants

# tenant ENGAGEMENT + COMMUNITY

- Weekly food trucks
- Community drives, walks, and fundraisers
- Group fitness classes
- Live entertainment
- Skill-based workshops and more



what tenants are saying

“I love the fitness classes. The teachers are great and it’s a good initiative.”

“Super fun times. Keep creating..the events have been extraordinary and help break up the stress of my work day.”

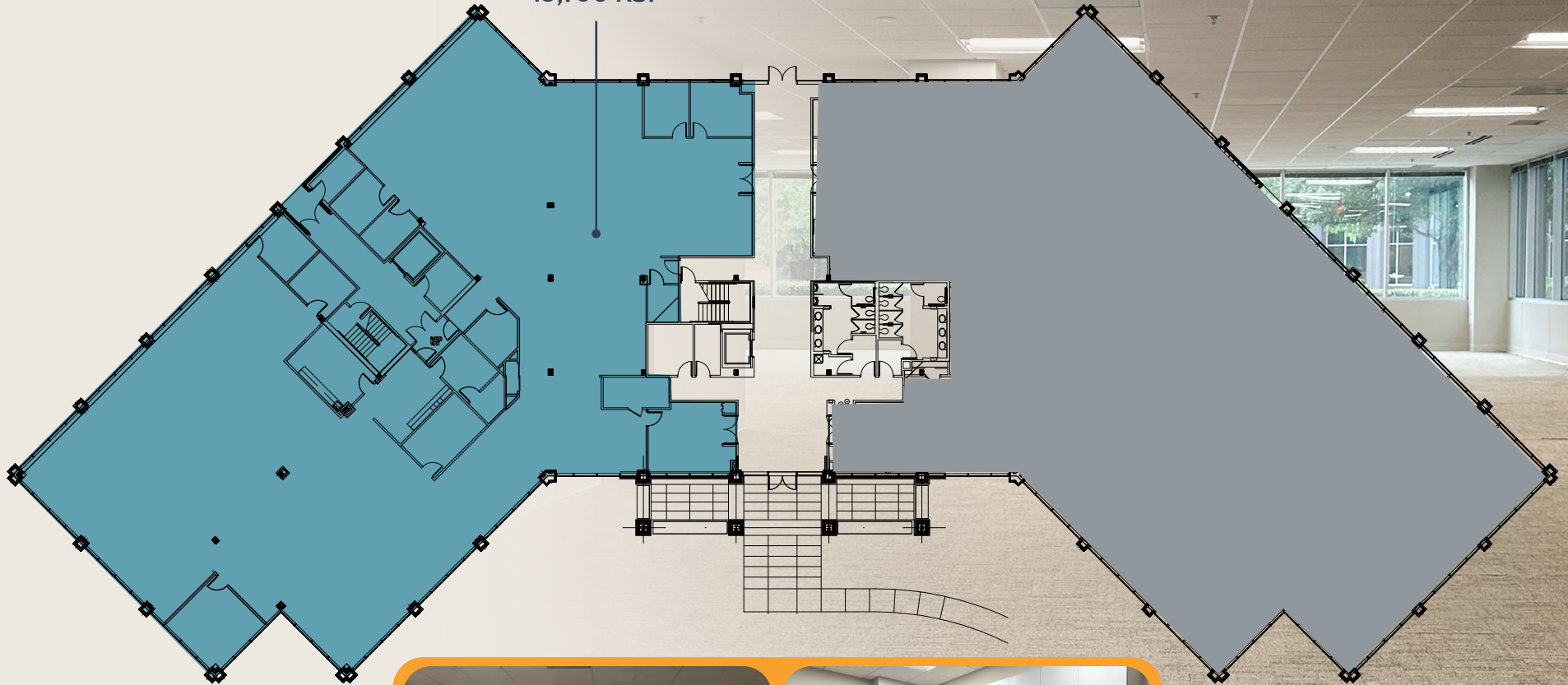
Tenants also appreciate the **sense of community** created by responsive, pro-active on-site property management and **curated tenant engagement** events throughout the year.



# FIRST FLOOR

AVAILABILITY

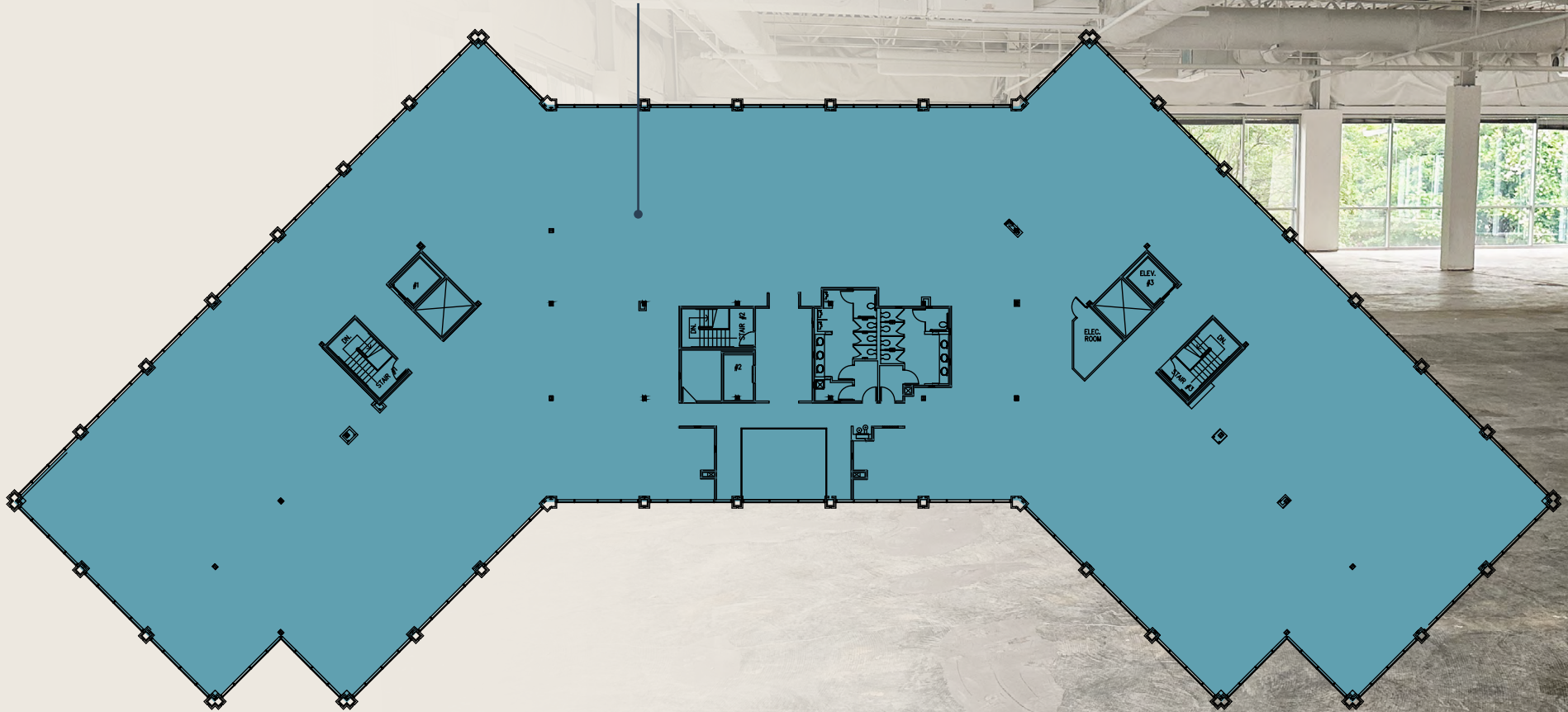
SUITE 140  
13,796 RSF



# SECOND FLOOR

FULL FLOOR OPPORTUNITY  
NEWLY WHITEBOXED

SUITE 200  
27,754 RSF



# CONTACT

## LEASING



### William Allen

Managing Partner  
919.415.4390  
wallen@trinity-partners.com

### Alex Dunn

Director, Office Leasing  
919.415.4405  
adunn@trinity-partners.com

## OWNERSHIP

mapletree

Headquartered in Singapore, Mapletree is a global real estate development, investment, capital and property management company committed to sustainability. Its strategic focus is to invest in markets and real estate sectors with good growth potential. By combining its key strengths, the Group has established a track record of award-winning projects, and delivers consistent and high returns across real estate asset classes.

[mapletree.com.sg](http://mapletree.com.sg)



PERIMETER

— PARK —

The information contained herein was obtained from sources believed reliable; however, Trinity Partners makes no guarantees, warranties, or representations as to the completeness or accuracy thereof. The presentation of this property is submitted subject to errors, omissions, changes of price or conditions prior to sale or lease, or withdrawal without notice.