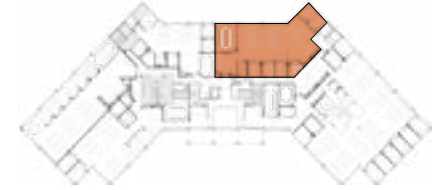


SUITE 240

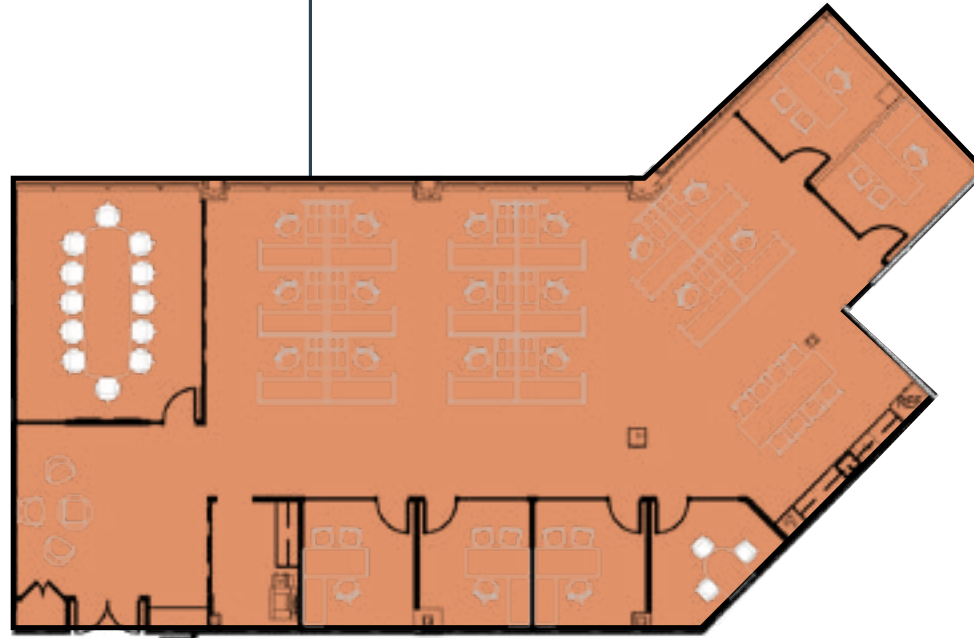
1800 PERIMETER PARK DRIVE | MORRISVILLE, NC 27560

1800 PERIMETER



future potential layout

SUITE 240
4,259 RSF



LEASING CONTACTS

William Allen
Managing Partner
919.415.4390 | wallen@trinity-partners.com

Alex Dunn
Director, Office Leasing
919.415.4405 | adunn@trinity-partners.com